

*Chris
Pelonis
Signature Series*



Model 42

Compact Active Studio Monitor System

Owner's Manual

www.chrispelonisspeakers.com

Model 42

The Pelonis Signature Series Model 42 is a 2-way active monitoring system with a very small footprint. Powering the dual concentric woofer and tweeter separately with individual custom designed 100 watt external amplifiers, this system can be configured for both stereo and surround applications.



Dual Concentric Driver

The dual-concentric driver by Tannoy is hand selected and scrutinized to very tight tolerances by Pelonis Sound. These drivers produce full and even frequency response with perfect phase alignment to the listener regardless of axis or the plane they sit on. The 4" woofer and 1" tweeter combine to provide a full range and impeccable sound field that extends all the way to 35khz.



Rhomboid

The lightweight and patented rhomboid shape of the Model 42's enclosure is designed to give you optimum sonic trajectory from the tweeter no matter where it sits. This unique cabinet design offers three different orientations, providing ideal angles to the listener and minimizing unnecessary surface reflections. Point it up at you from a desktop, or place it on the meter bridge of a console with the sides perpendicular to the front wall, instantly creating an equilateral triangle with your head. It can even be oriented pointing down from above the listening position.



Active External Electronics

Keeping sensitive electronics out of the vibrating, magnetic field of a speaker enclosure has become something of a lost art. Additionally, running audio cables parallel to power cables is undesirable and we go as far as possible to eliminate this potential problem.

The single rack space power unit delivers an ultra-flat frequency response, extremely low noise floor, and no listener fatigue. It houses four 100 watt custom designed class-D amplifiers using true analog implementation, allowing them to operate more in the form of Class-AB amplifiers. Completing the package is a proprietary cascading active crossover system that virtually eliminates the crossover point, insuring the most even frequency response.

Headroom and Gain

Hearing the full dynamic range of your material is crucial, with more than 20dB of headroom, clipping is virtually eliminated. There are no limiters in the signal chain. Consequently, Pelonis speakers may play at a lower volume than those from other manufacturers, but that can be easily changed. The CP Control DSP software controller allows for an additional boost of 6dB, making it possible to match the audio level with other sets of speakers.

Connecting the Power Unit

Before making or changing any connections, always turn the power switch to the down or off position. After all connections have been made, turn the switch back on. The blue LED indicates the system is ready to play.

The power unit is connected to the speakers using high quality speaker wire. Oxygen free 18 AWG wire is included to make sure you can use your new system right out of the box, but can be replaced with higher quality cables to improve the system's performance. Each speaker does require separate high and low frequency speaker wire runs.

Care should be taken when connecting speaker wire to terminals as to not allow stray wire to touch other wire or terminals.

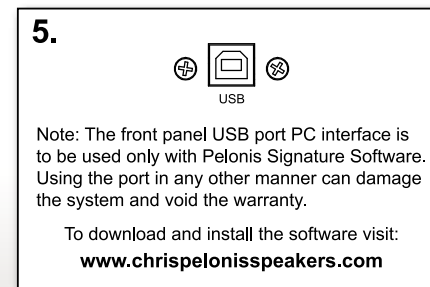
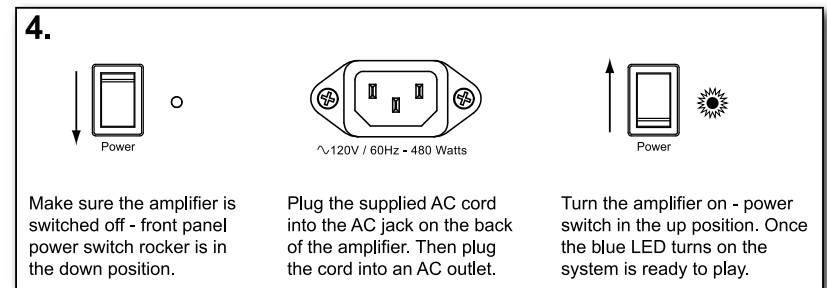
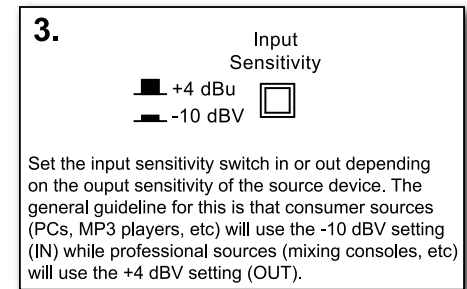
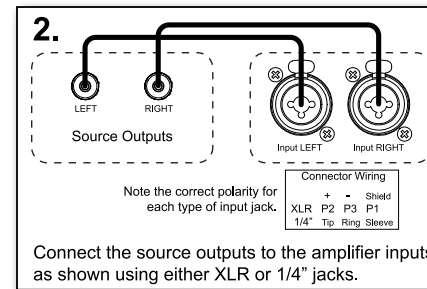
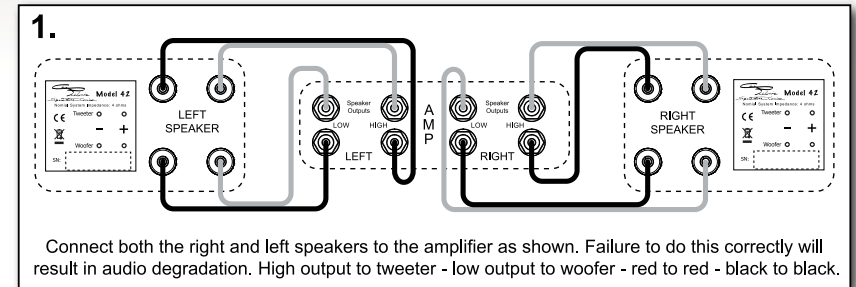
Connect the left and right source outputs to the amplifier inputs using either XLR or 1/4" jacks.

Setting the Input Sensitivity

Set the input sensitivity button according to the source device. The general guideline is -10dbv for PCs, MP3 players, etc. and +4 for professional sources like mixing consoles. Both inputs are balanced and can be further used to maintain consistent levels between differing sets of speakers. The -10dbv input does allow for unbalanced connections.

DSP Control

The USB jack on the front of the power unit provides a direct interface to your computer, allowing you to control the DSP features. Custom settings are then saved in the power unit after changes have been made, no longer requiring the USB cable to remain connected for custom settings to be maintained.



SPECIFICATIONS

SYSTEM TYPE

4" two-way Dual Concentric speaker

FREQUENCY RESPONSE

75Hz-35kHz (± 3 dB)

SYSTEM SENSITIVITY

90dB (395mV input, 2.83V output @ 1m, 1kHz LF output, -10dBV input sensitivity)

RATED MAXIMUM SPL

106dB (Peak SPL for 1 pair driven, 2.0V input @ 1m, -10dBV input sensitivity)

DISPERSION

60° (-6dB across frequency range)

THD

0.6% (2.83V @ 1m, 1kHz LF output, 100Hz-10kHz)

LF DRIVER

4" (100mm) multi fiber paper pulp cone

LF NOMINAL IMPEDANCE

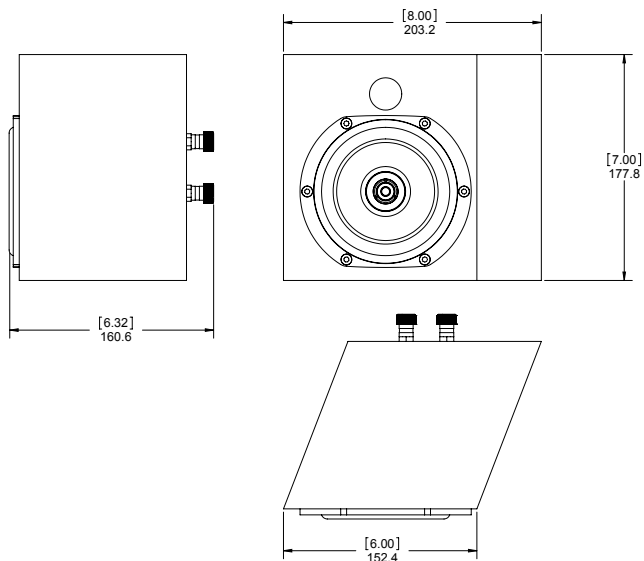
6 Ohms

HF DRIVER

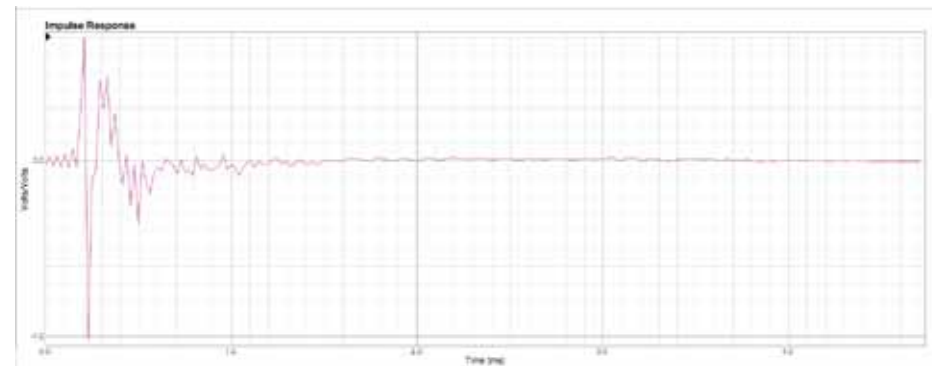
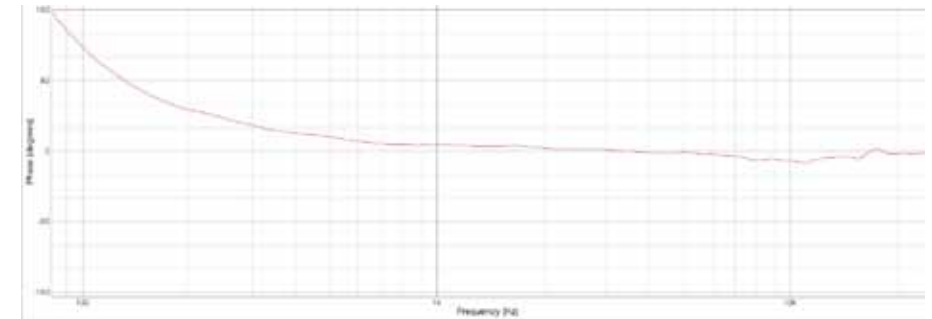
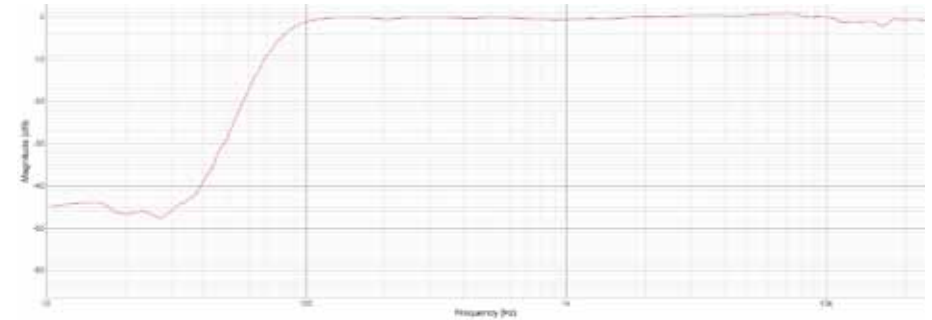
0.75" (19mm) titanium dome with neodymium magnet system

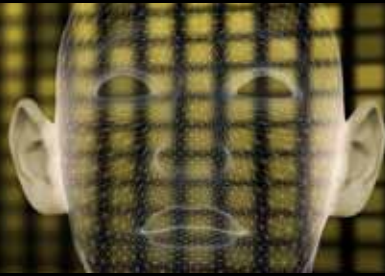
HF NOMINAL IMPEDANCE

4 Ohms



Anechoic Measurements Model 42





Chris
Pelonis
Signature Series

Pelonis Sound and Acoustics, Inc.

Santa Barbara, CA.

Phone: 805 242 1041

email: info@pelonissound.com

www.chrispelonisspeakers.com